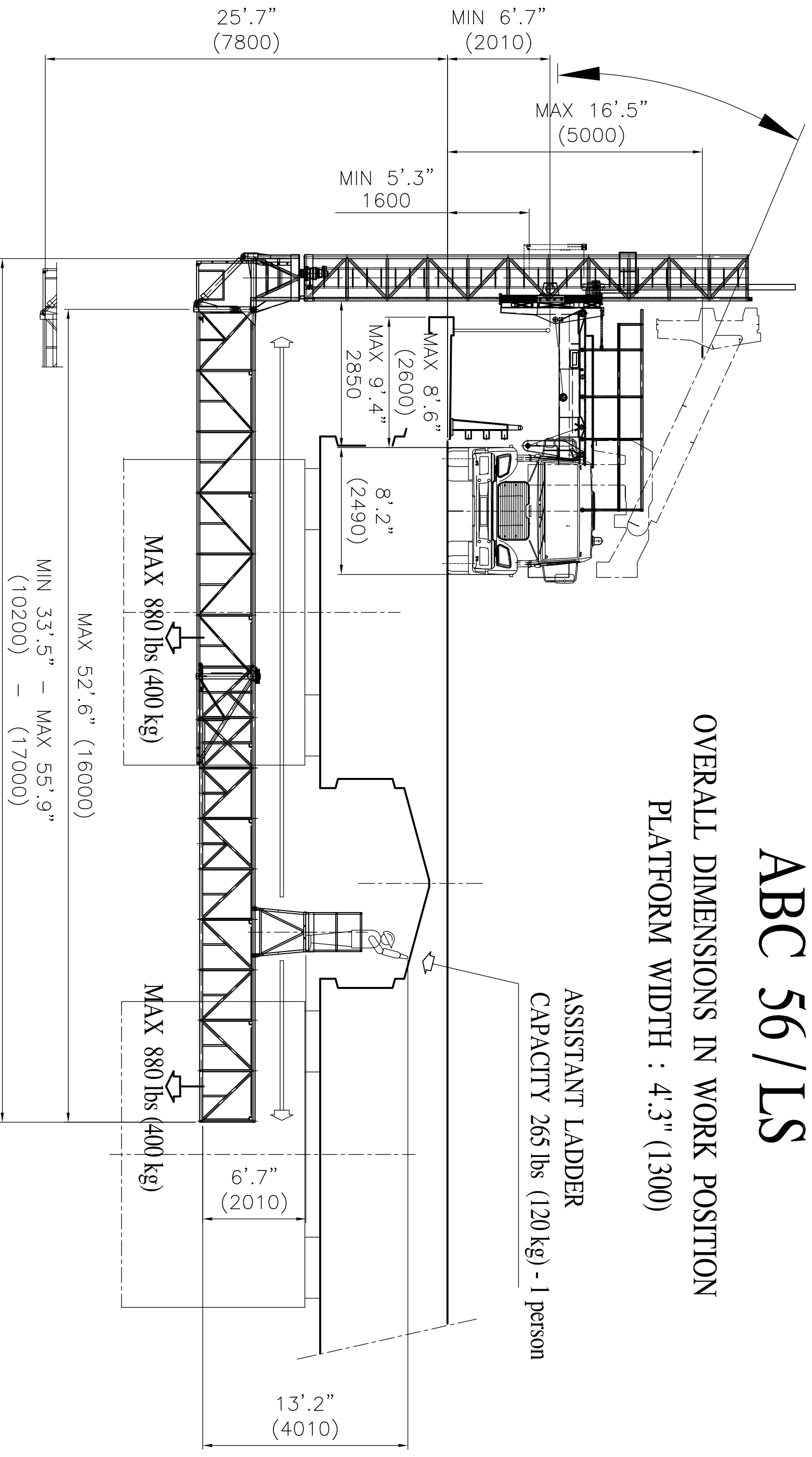


# ABC 56 / LS

OVERALL DIMENSIONS IN WORK POSITION  
 PLATFORM WIDTH : 4'3" (1300)

ASSISTANT LADDER  
 CAPACITY 265 lbs (120 kg) - 1 person



PLATFORM CAPACITY : 1.760 lbs (800 kg)

SUBJECT TO SLIGHT MODIFICATIONS



denom.ne GENERAL SCHEME		motr.	dis.n.	lov.n.
compl.vo ABC		Usd	8578	
CAD DWG	rf.dis.n.	dis.	Cestaro B.	cont. Ing Zuccolo Tristano
— cittadella pd — tel:049/5971300 fax 049/9400229 — http://www.barin.it E-mail:info@barin.it		— even partial is forbidden by law—use and spreading to third parties is forbidden—copyright		
data 04/02/2011		scale 1:75		