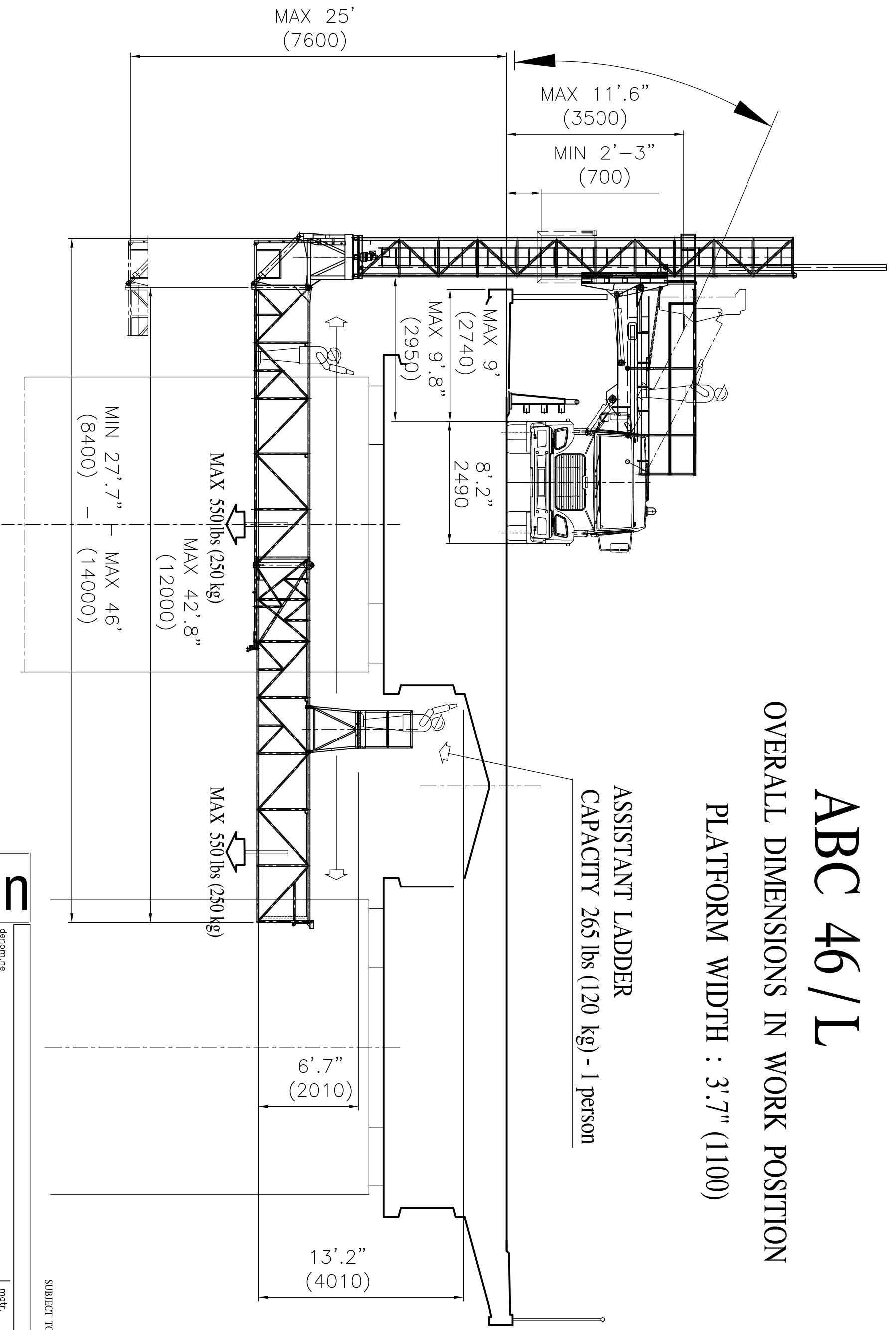


ABC 46 / L

OVERALL DIMENSIONS IN WORK POSITION

PLATFORM WIDTH : 3'7" (1100)

ASSISTANT LADDER
CAPACITY 265 lbs (120 kg) - 1 person



SUBJECT TO SLIGHT MODIFICATIONS

PLATFORM CAPACITY : 1100 lbs (500 kg)



denom.re		modr.		dis.n.		lov.n.	
Standard		Standard		8593			
compi.vo GENERAL SCHEME				data			
CAD DWG				08/02/2011			
rif.dis.n.		dis.		Cestaro B.		cont. Ing Zuccolo Tristano	
— cittadella pd — tel:049/5971300 fax 049/9400229 — http://www.borin.it E-mail:info@borin.it				even partial is forbidden by law—use and spreading to third parties is forbidden—copyright			