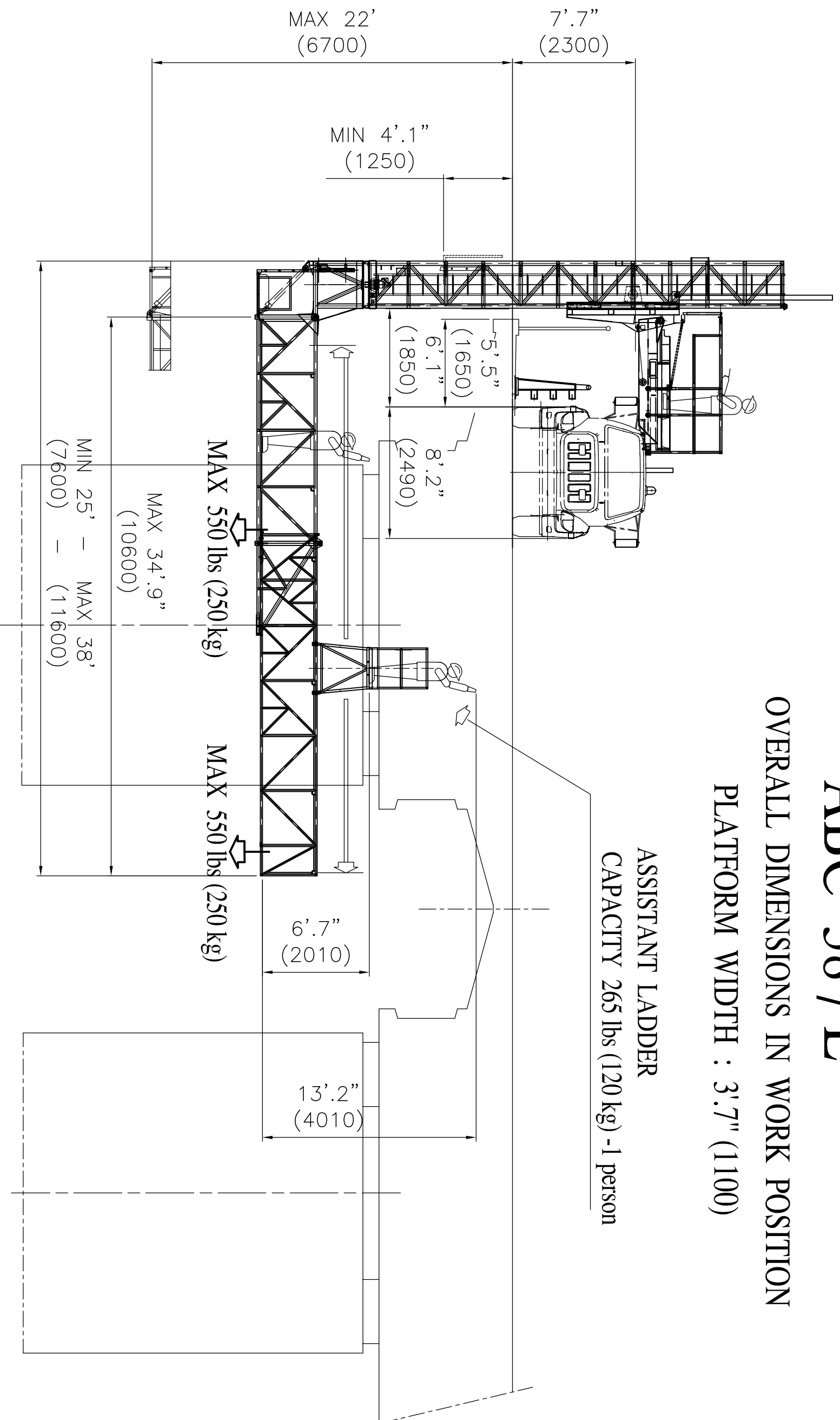


# ABC 38 / L

OVERALL DIMENSIONS IN WORK POSITION  
 PLATFORM WIDTH : 3'7" (1100)

ASSISTANT LADDER  
 CAPACITY 265 lbs (120 kg) - 1 person



PLATFORM CAPACITY : 1100 lbs (500 kg)

SUBJECT TO SLIGHT MODIFICATIONS



denom.ne GENERAL SCHEME		modr.	dis.n.	lov.n.
compi.vo ABC		Usa	8588	
CAD DWG	rif.dis.n.	dis.	Cestaro B.	cont. Ing Zuccolo Tristano
— cittadella pd — tel:049/5971300 fax 049/9400229 — http://www.borin.it E-mail:info@borin.it		even partial is forbidden by law—use and spreading to third parties is forbidden—copyright		
date 07/02/2011		scale 1:75		